

# EXPERTISE, INSIGHT, METHODOLOGY



**Power Systems Research**  
*Data · Forecasting · Solutions™*

# MORE THAN 45 YEARS OF EXPERIENCE IN DATA COLLECTION, ANALYSIS AND FORECASTING



Power Systems Research has built a solid reputation for helping businesses understand markets by providing reliable hard-to-find data, forecasts and intelligence. Simply stated, we know the industries and the players. When you need it, we have it.

## A Global Vision with a Local Perspective

Power Systems Research has experts who live and work in the global epicenters of vehicle equipment and powertrain manufacturing. Our team understands the business drivers within each market and have personal relationships with industry contacts. This exclusive information ensures we identify, confirm and deliver information you can trust.

## Not Just Data. The Right Data.

We understand the big picture and the underlying details of world markets. Our bottom-up analysis approach takes more time and more effort but in the end is more accurate. Our clients look to us to provide focused data, information, intelligence, analysis, forecasts and guidance. A better market understanding as well as insightful data will translate into impactful strategies that produce results.

## Outpace the Competition

- Identify original equipment manufacturers
- Quantify OEM historical and forecast production
- Understand product line potential
- Measure industry share
- Monitor growth trends and migration between powertrain technology types
- Develop industry benchmarks
- Study competitor profiles



# PRODUCTS AND SERVICES THAT GROW YOUR BUSINESS

## Industry Databases

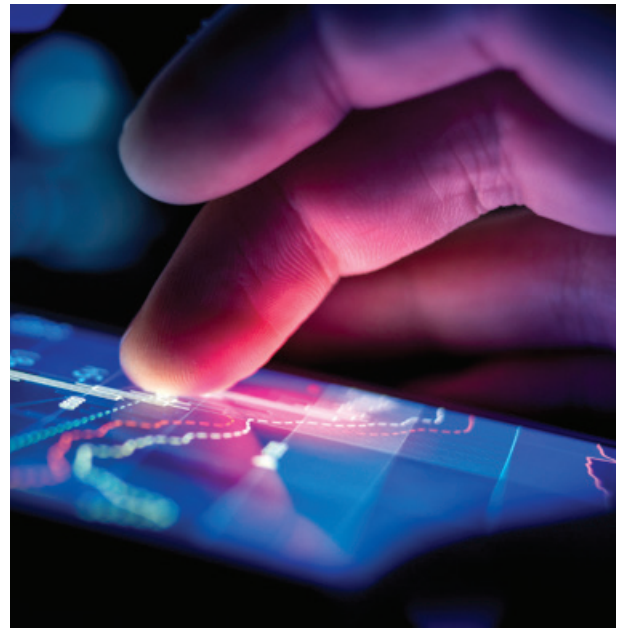
- **EnginLink™** Global engine production, forecast and specification data covering the full range of highway vehicle & non-road segments
- **OE Link™** OEM production and forecast data with engine and alternative drive installation detail for the full range of highway vehicle & non-road segments
- **CV Link™** Global commercial vehicle production and forecast data with engine, transmission and alternative drive installation detail
- **PartsLink™** In-service population data for highway vehicles & non-road equipment segments
- **MarineLink™** Inboard and stern drive pleasure boat production with engine installation detail

## Information for multiple industries and markets

- Agriculture
- Alternative Power
- Construction
- Industrial
- Lawn and Garden
- Light Commercial Vehicles
- Marine Auxiliary
- Marine Propulsion
- Medium and Heavy Vehicles
- Minivans and SUVs
- Passenger Cars
- Power Generation
- Railway
- Recreational Product

## Related Products & Services

- White papers
- Proprietary market studies
- Customer satisfaction surveys
- Strategic planning support
- Cost structure
- Mergers & acquisitions support
- Monitor competitive trends in the market





## CONTACT US

### Purchasing and Inquiries

Headquarters  
St. Paul, USA  
+1 651 905 8400  
info@powersys.com

Detroit, USA  
+1 734 545 0474  
infode@powersys.com

Beijing, China  
+86 10 5737 9201  
infocn@powersys.com

Campinas, Brazil  
+55 19 3305 5657  
infosa@powersys.com

European Headquarters  
Brussels, Belgium  
+32 2 643 2828  
infofr@powersys.com

Frankfurt, Germany  
+49 160 1807 044  
infofe@powersys.com

Pune, India  
infoin@powersys.com

Tokyo, Japan  
+81 90 9139 0934  
infojp@powersys.com

## About Power Systems Research

Power Systems Research (PSR), established in 1976, is the leading source of data, analysis and forecasting on the global production of engines and engine-powered equipment, including class 8 vehicles. One of its databases, OE Link™, includes production figures down to the model level for OEMs in key market segments, such as commercial vehicles. PSR's global research network includes eight offices and stretches across 200 countries and four continents.

