

## The single source of global in-service population data



**PartsLink™** is a comprehensive resource providing in-service population data for engine powered vehicles and equipment. Historical, current and forecast population data are included for more than 200 countries and over 300 product categories of engine powered vehicles and equipment.

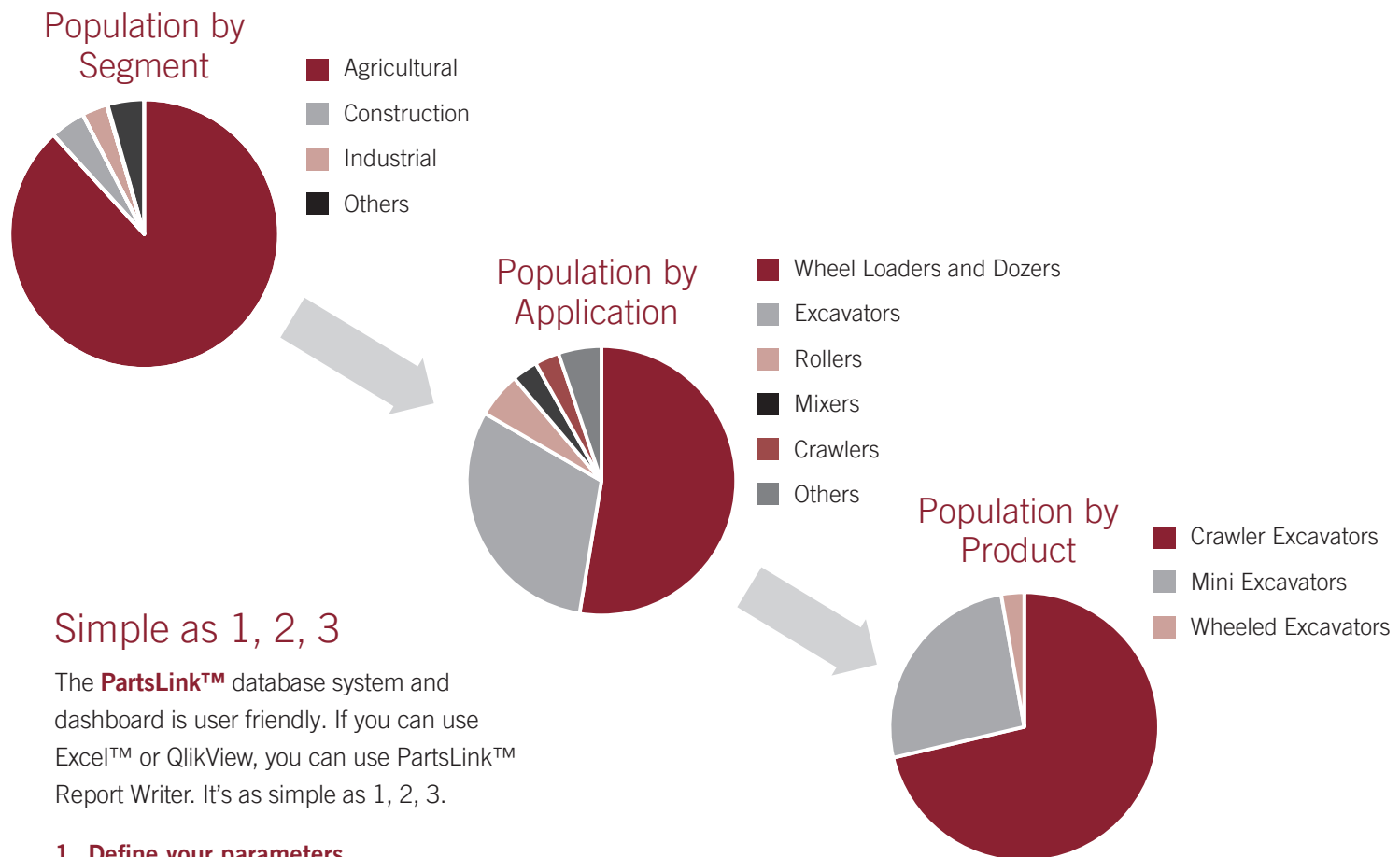
When you're considering specific products in operation in a given country, PartsLink™ enables you to identify growth opportunities, understand market complexities and determine market potential. It also provides benchmarks to measure industry share and sales performance.

### **This resource is used by leading**

- Vehicle and equipment manufacturers
- Parts suppliers and systems integrators
- Industry associations
- Government agencies and regulators
- Financial analysts and more



Now, it's easy to find the data at the level of detail you require.



## Simple as 1, 2, 3

The **PartsLink™** database system and dashboard is user friendly. If you can use Excel™ or QlikView, you can use PartsLink™ Report Writer. It's as simple as 1, 2, 3.

### 1. Define your parameters.

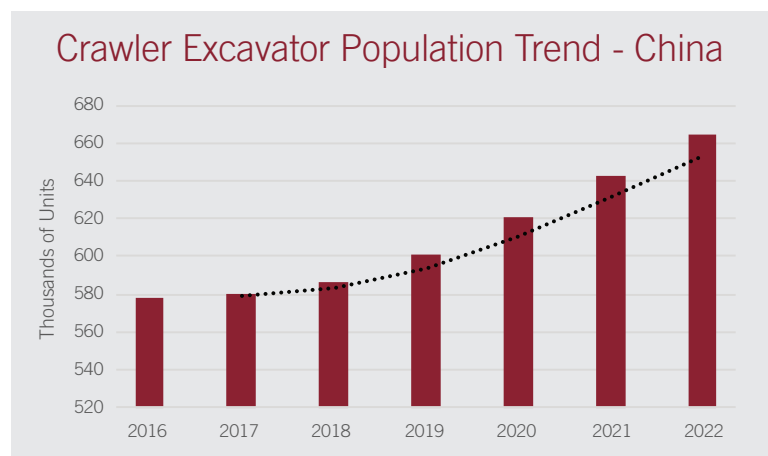
For example: Evaluate the population of crawler excavators in China.

### 2. Narrow your search by country and application:

China and excavators.

### 3. Produce your report and evaluate your information:

China in-service population of crawler excavators, 2016-2022.



## A powerful resource

**PartsLink™** provides reliable data to evaluate the size of replacement parts markets. A proven proprietary methodology incorporates OEM production data, import–export statistics and life cycle algorithms to model in-service population data.

### Product specifications include:

- Units in service
- Year produced
- Segment, application and product classification
- OEM name and brand
- Engine supplier
- Region or country of sale
- Information from multiple industries and markets

### PartsLink™ can help you:

- Identify original equipment manufacturers
- Quantify OEM historical and forecast production
- Understand product line potential
- Measure industry share
- Monitor growth trends
- Develop industry benchmarks
- Study competitor profiles

## Information for multiple industries and markets

- Agriculture
- Construction
- Industrial
- Lawn and Garden
- Light Commercial Vehicles
- Marine Auxiliary
- Marine Propulsion
- Medium and Heavy Vehicles
- Minivans and SUVs
- Passenger Cars
- Power Generation
- Railway
- Recreational Products



**Power Systems Research provides strategic and forecasting analysis.**



**PartsLink™ provides detailed views of overall market performance**



**PartsLink™ helps you understand product line potential**





**Power Systems Research is a worldwide leader in providing production and business information and forecasting for power equipment.**

## Fulfilling your information needs

Power Systems Research has been providing world class business and market intelligence on power equipment to industry leaders for more than 40 years. A comprehensive range of database products and strategic analysis services is available to meet your planning needs.

### Industry Databases

- EnginLink™
- OE Link™
- CV Link™
- PartsLink™

### Syndicated Surveys

- PowerTracker™

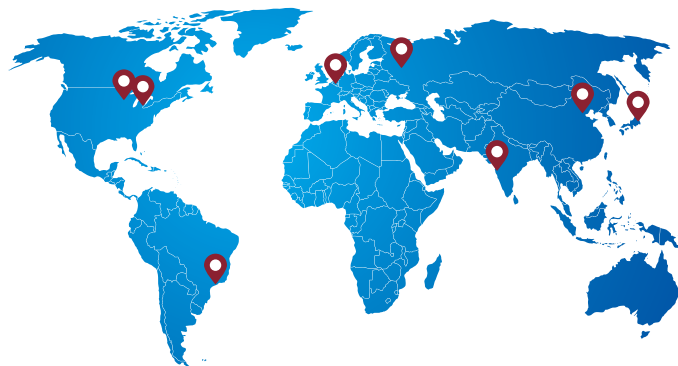
### Related Products and Services

- Proprietary market studies
- Customer satisfaction surveys
- M&A due diligence support

## Your long-term partner

When you engage the resources of Power Systems Research, we become part of your team. Because we are deeply involved in the industry every day, our learning curve is minimized. We have the resources to become an extension of your initiative, and this seamless collaboration produces useful, actionable results. Dependable customer experience touches every aspect of our relationship.

For more information about Power Systems Research, visit [www.powersys.com](http://www.powersys.com).



## Locations

### Headquarters

St. Paul, USA  
+1.651.905.8400  
+1.651.904.8409  
[info@powersys.com](mailto:info@powersys.com)

### Detroit, USA

+1.651.905.8452  
+1.651.905.8443  
[info@powersys.com](mailto:info@powersys.com)

### Beijing, China

+86.10.5737.9201  
[info@powersys.com](mailto:info@powersys.com)

### Moscow, Russia

+ 32.2.643.2828  
[info@powersys.com](mailto:info@powersys.com)

### Brussels, Belgium

+ 32.2.643.2828  
[info@powersys.com](mailto:info@powersys.com)

### Pune, India

+91.20.25671110  
Mobile: +91.9960641110  
[info@powersys.com](mailto:info@powersys.com)

### Campinas, Brazil

+55.19.3305.5657  
[info@powersys.com](mailto:info@powersys.com)

### Tokyo, Japan

+91.90.9139.0934  
[info@powersys.com](mailto:info@powersys.com)



**Power Systems Research**  
*Data · Forecasting · Solutions™*