

The single source of global in-service population data



PartsLink™ is a comprehensive resource providing in-service population data for engine powered vehicles and equipment. Historical, current and forecast population data are included for more than 200 countries and over 300 product categories of engine powered vehicles and equipment.

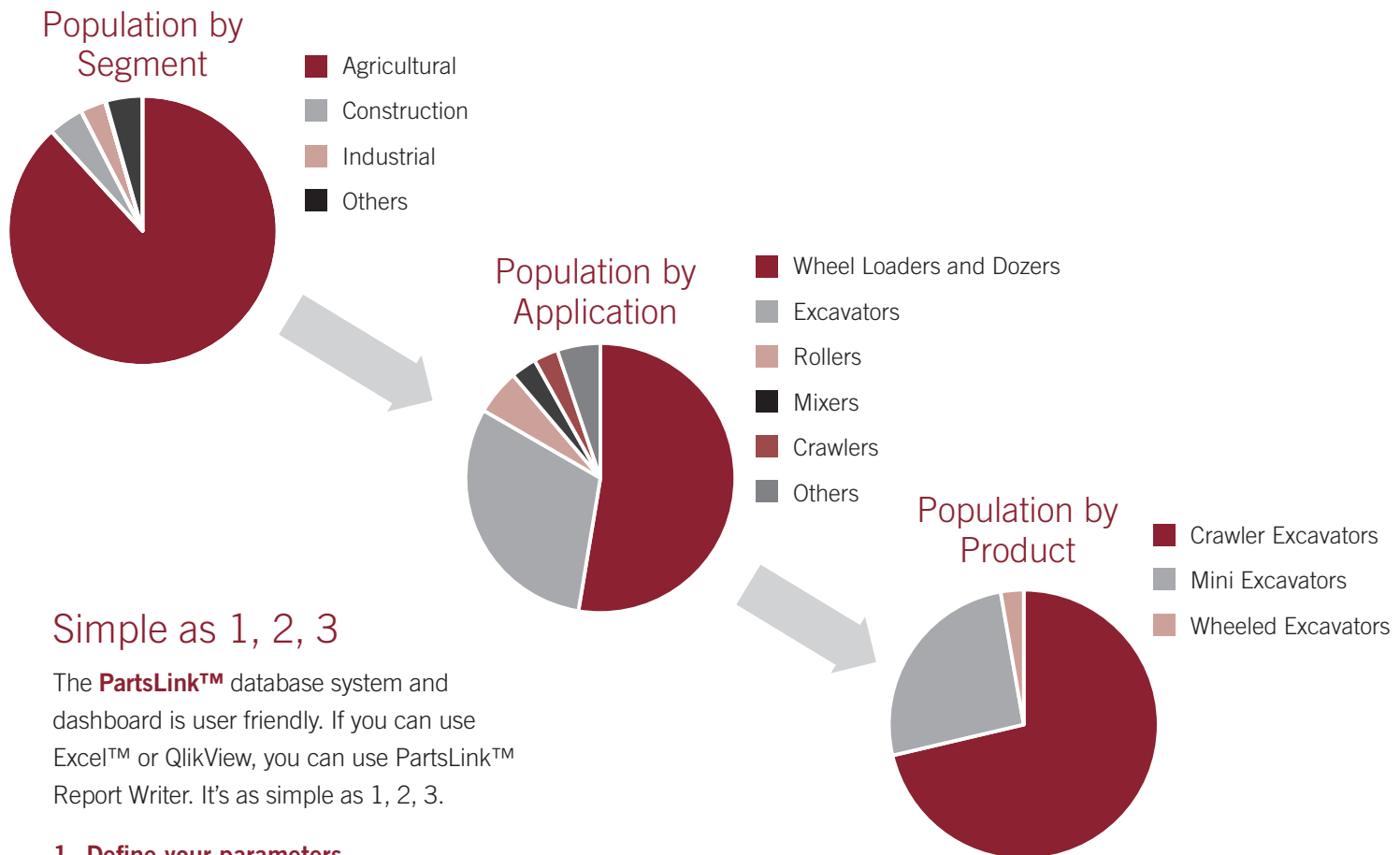
When you're considering specific products in operation in a given country, PartsLink™ enables you to identify growth opportunities, understand market complexities and determine market potential. It also provides benchmarks to measure industry share and sales performance.

This resource is used by leading

- Vehicle and equipment manufacturers
- Parts suppliers and systems integrators
- Industry associations
- Government agencies and regulators
- Financial analysts and more



Now, it's easy to find the data at the level of detail you require.

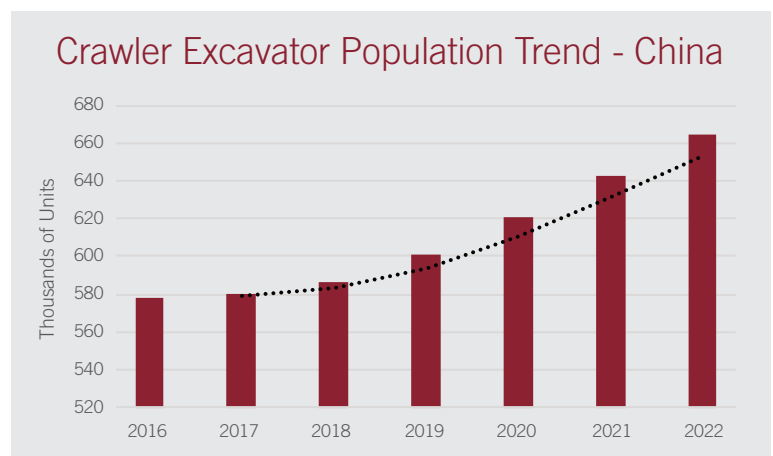


1. Define your parameters.

For example: Evaluate the population of crawler excavators in China.

2. Narrow your search by country and application: China and excavators.

3. Produce your report and evaluate your information: China in-service population of crawler excavators, 2016-2022.



A powerful resource

PartsLink™ provides reliable data to evaluate the size of replacement parts markets. A proven proprietary methodology incorporates OEM production data, import–export statistics and life cycle algorithms to model in-service population data.

Product specifications include:

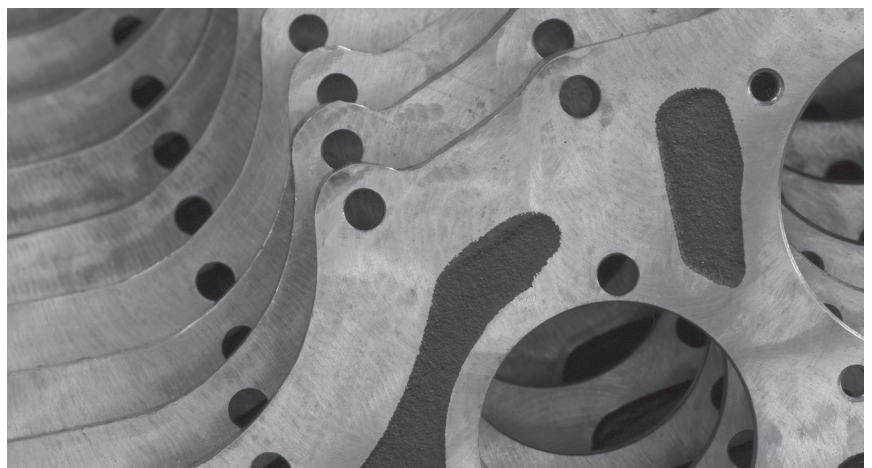
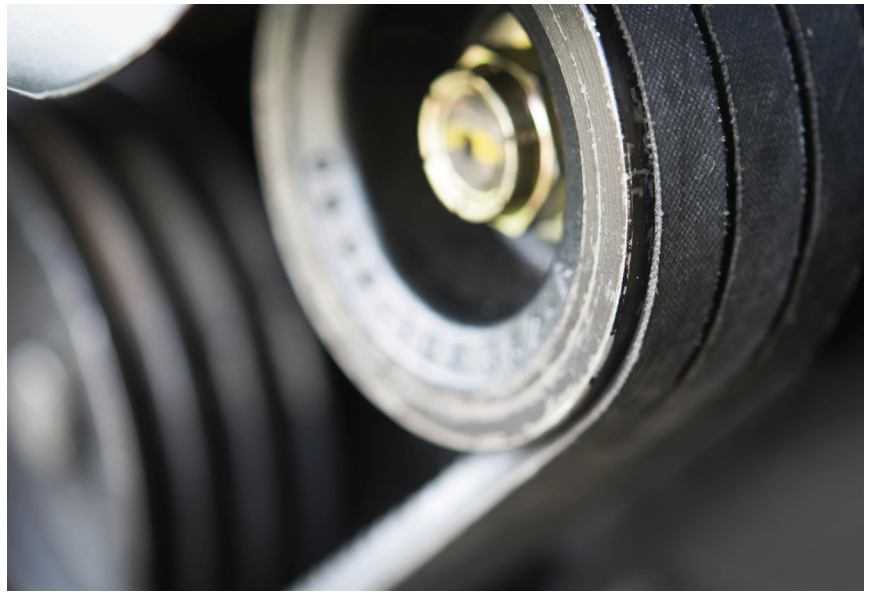
- Units in service
- Year produced
- Segment, application and product classification
- OEM name and brand
- Engine supplier
- Region or country of sale
- Information from multiple industries and markets

PartsLink™ can help you:

- Identify original equipment manufacturers
- Quantify OEM historical and forecast production
- Understand product line potential
- Measure industry share
- Monitor growth trends
- Develop industry benchmarks
- Study competitor profiles

Information for multiple industries and markets

- Agriculture
- Construction
- Industrial
- Lawn and Garden
- Light Commercial Vehicles
- Marine Auxiliary
- Marine Propulsion
- Medium and Heavy Vehicles
- Minivans and SUVs
- Passenger Cars
- Power Generation
- Railway
- Recreational Products





Fulfilling your information needs

Power Systems Research has been providing market intelligence for more than 40 years. A comprehensive range of products and services is available to meet your planning needs.

Industry Databases

- EnginLink™
- OE Link™
- CV Link™
- PartsLink™

Syndicated Surveys

- PowerTracker™

Related Products and Services

- Proprietary market studies
- Customer satisfaction surveys
- M&A due diligence support

Your long-term partner

When you engage the resources of Power Systems Research, we become part of your team. Because we are deeply involved in the industry every day, our learning curve is minimized. We have the resources to become an extension of your initiative, and this seamless collaboration produces useful, actionable results. Dependable customer experience touches every aspect of our relationship.

For more information about Power Systems Research, visit www.powersys.com.



Locations

Headquarters
St. Paul, USA
+1 651 905 8400
info@powersys.com

Detroit, USA
+1 734 761 3440
infode@powersys.com

Beijing, China
+86 10 5737 9201
infocn@powersys.com

Moscow, Russia
+7 910 423 23 92
inforu@powersys.com

Brussels, Belgium
+ 32 2 643 2828
infobr@powersys.com

Pune, India
+91-20-25671110
Mobile: +91-9960641110
infoin@powersys.com

Campinas, Brazil
+55 19 3305 5657
infosa@powersys.com

Tokyo, Japan
+91 90 9139 0934
infojp@powersys.com



Power Systems Research
Powerful Possibilities™